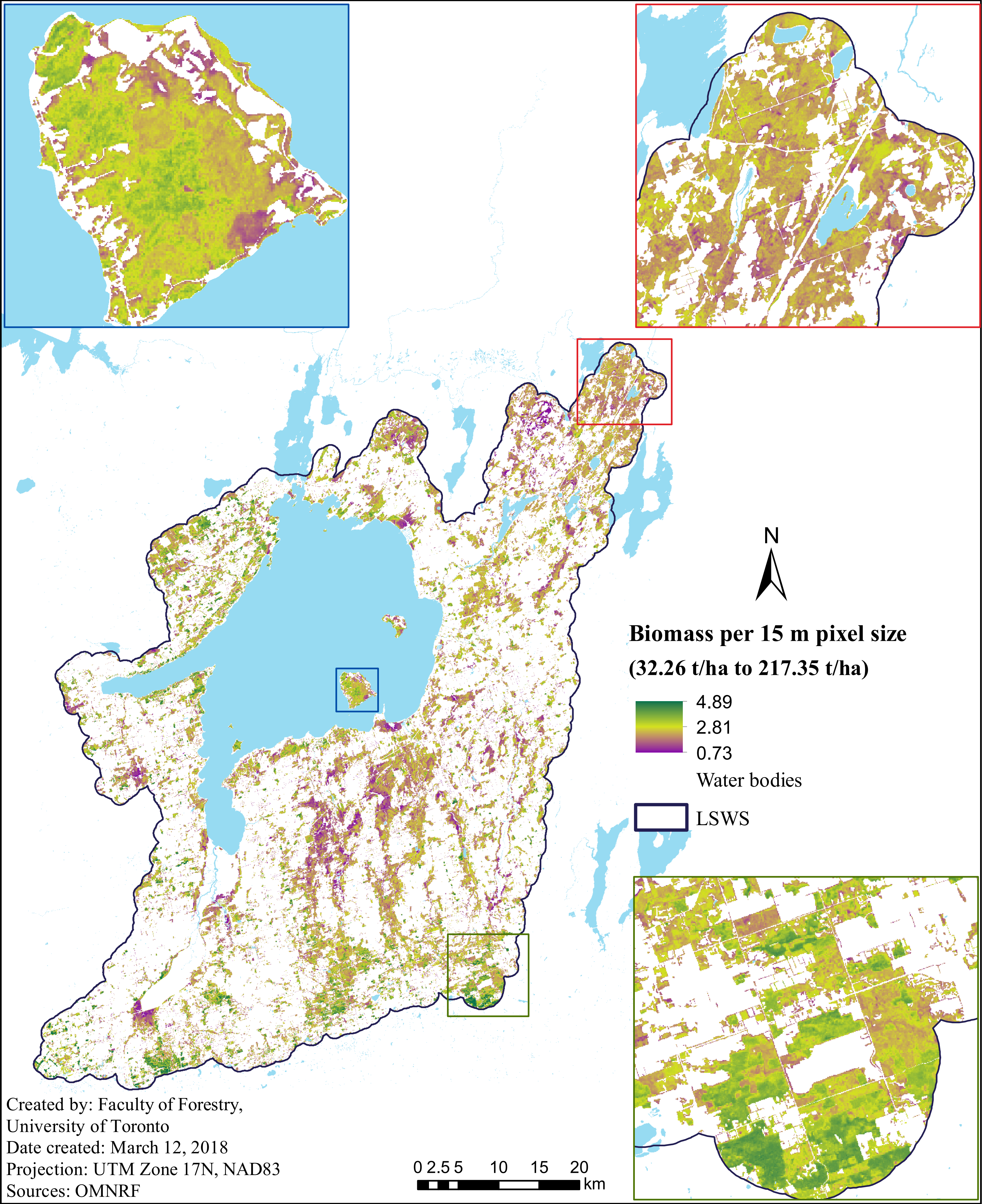


# Biomass Estimation Model

## Lake Simcoe Watershed, Southern Ontario

Predicted forest biomass for the Lake Simcoe Watershed (tonnes per pixel) at 15 m spatial resolution: biomass estimates based on VSP plot data, allometric formulas, and Random Forest (RF) modeling.

Forest biomass estimates for the Lake Simcoe Watershed was produced by integrating plot level biomass estimation (i.e., biomass estimates computed based on Lambert et al. (2005) allometric formula) and remotely sensed parameters using a machine-learning (Random Forest) algorithm. Estimates of forest biomass for this grid are presented in tonnes/pixel.



For more information, please refer to a report on - Modelling forest biomass and carbon stock across an urban-rural landscape in the Lake Simcoe Watershed (2018).

Danijela Puric-Mladenovic  
and  
Yikalo H. Araya