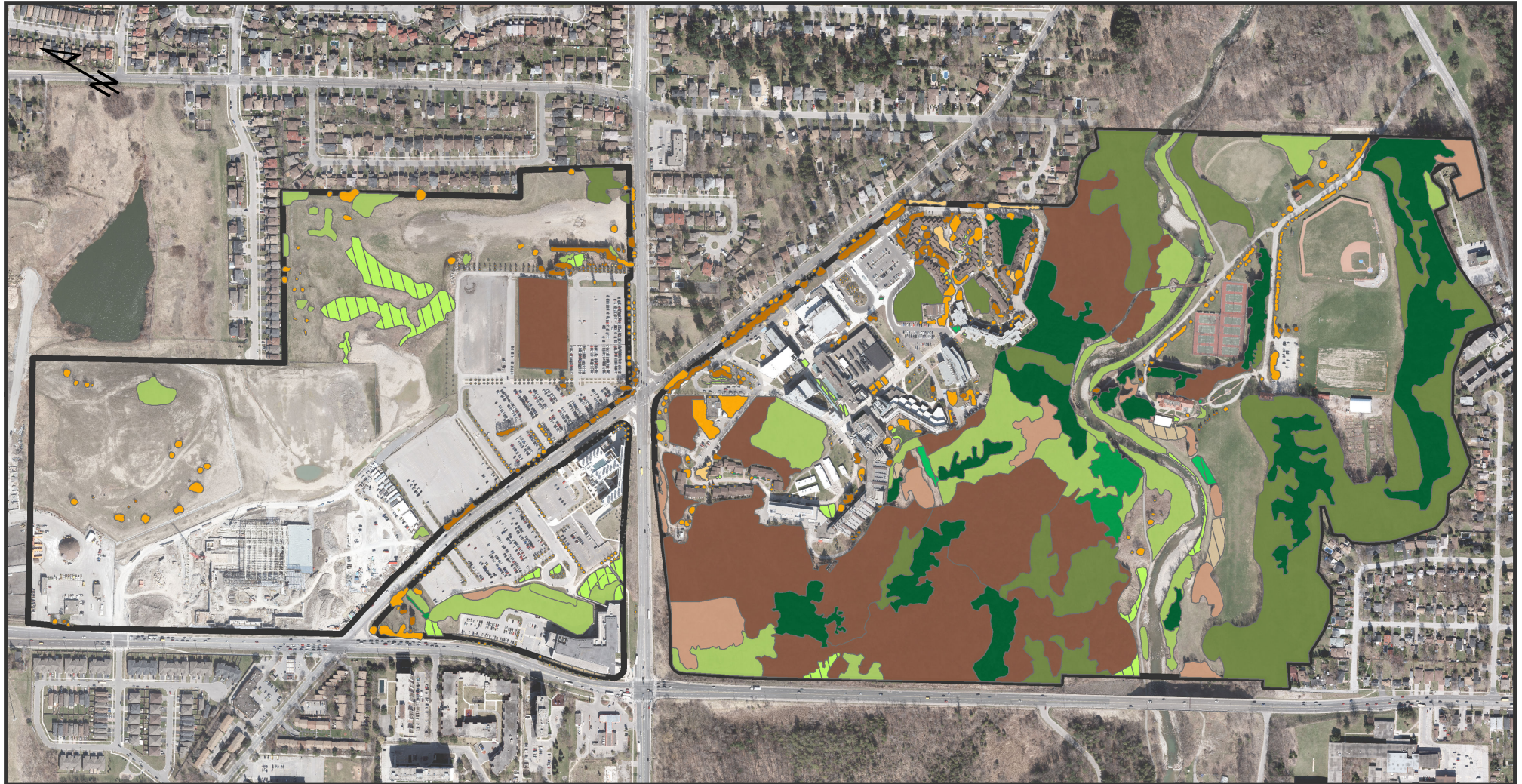


UNIVERSITY OF TORONTO'S FORESTS AND TREES

SCARBOROUGH CAMPUS (UTSC)

Single tree canopy and woodlands (forest stands) were delineated and classified according to their vegetation persistence (deciduous, coniferous, mixed) and successional stage (early, mid, late, shrub succession, single tree canopy). Single tree and woodland stand mapping was accomplished using available orthophotography (City of Toronto 2013), with features validated using Google Earth Pro satellite imagery as a secondary reference.



Single Tree Canopy

Vegetation Persistence

- CONIF
- DECIDU
- MIXED

UTSC Property

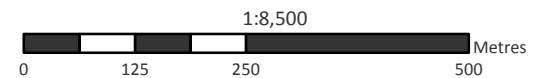
Woodland Area

Vegetation Persistence

- | | | | |
|--|--|--|-------|
| CONIF | DECIDU | MIXED | |
| | | | Late |
| | | | Mid |
| | | | Early |
| | | | Shrub |

Successional Stage

North American Datum 1983
Universal Transverse Mercator
Zone 17N



Created by: Forests in Settled and Urbanized Landscapes Applied Research Group,
University of Toronto Faculty of Forestry using ArcMap10.5 on January 24, 2019
Source: MNR Ownership Parcels (2013), City of Toronto Orthoimagery (2013)
More information about this project can be found at: www.forests-settled-urban-landscapes.org