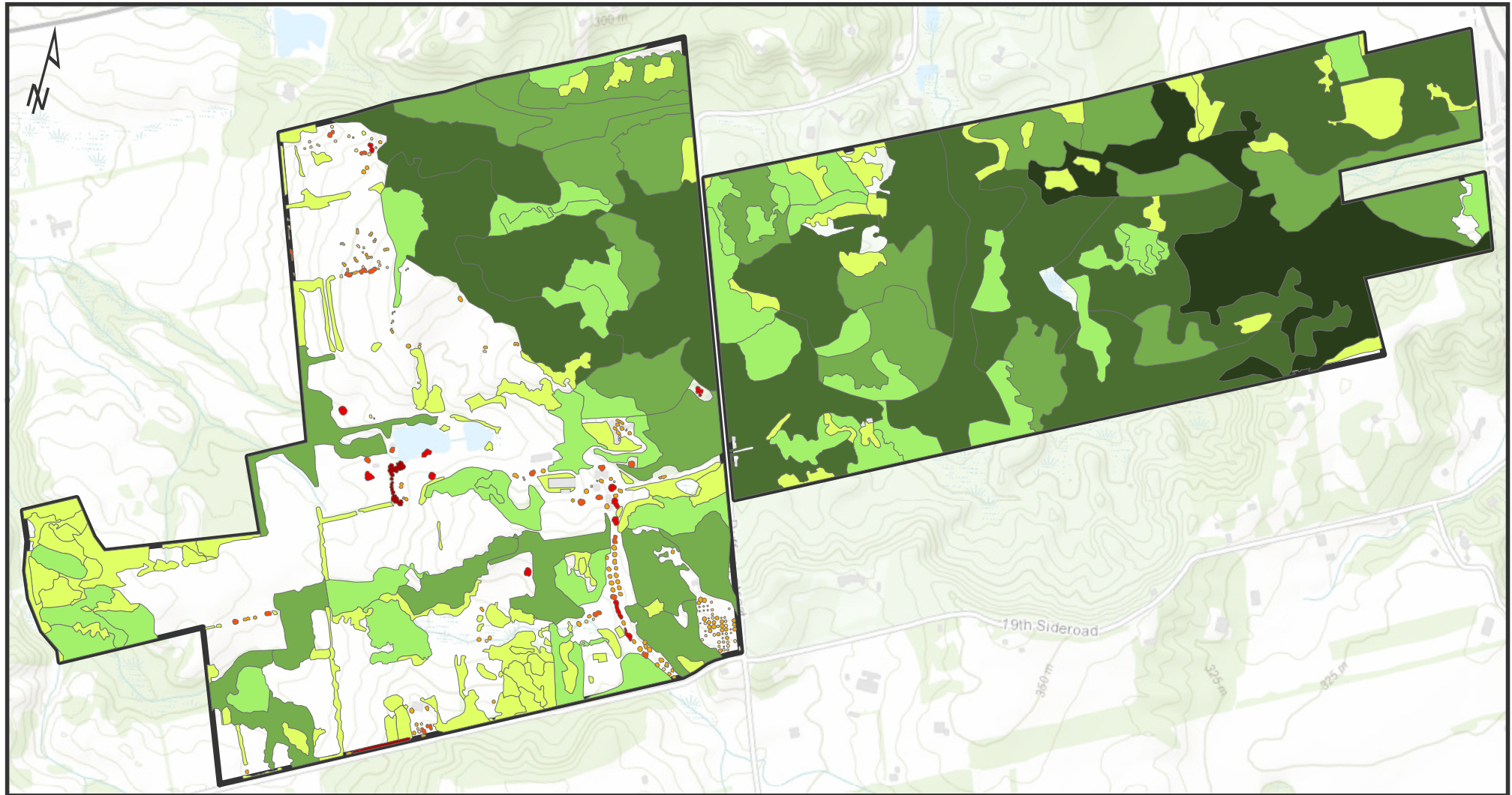


UNIVERSITY OF TORONTO'S FORESTS AND TREES

CARBON STORED AT KOFFLER SCIENCE RESERVE (KSR)

Carbon storage for single trees at KSR was extrapolated using average carbon storage per canopy area values derived using i-Tree ECO software based on tree species and diameter at breast height (DBH) of Neighbourwoods© tree monitoring data. Carbon storage for woodlands at KSR was generated using average carbon storage per woodland area values derived based on forest successional stage using Vegetation Sampling Protocol (VSP) natural areas field data from southern Ontario.



Single Tree Canopy

Carbon Stored (kg)

- 3387 - 7386
- 1597 - 3386
- 874 - 1596
- 388 - 873
- 29 - 387

Woodland Area

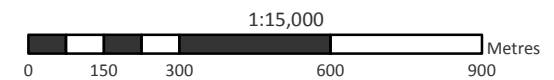
Carbon Stored (Mg)

- 1218.65 - 2021.13
- 442.67 - 1218.64
- 168.46 - 442.66
- 55.69 - 168.45
- 0.15 - 56.68

KSR Property

Total Carbon Stored: 23,942.24 Mg

North American Datum 1983
Universal Transverse Mercator
Zone 17N



Created by: Forests in Settled and Urbanized Landscapes Applied Research Group,
University of Toronto Faculty of Forestry using ArcMap10.5 on January 24, 2019
Source: Neighbourwoods© Tree Inventory Field Data (2017), VSP Natural Areas Inventory
Data (2017), MNRF Ownership Parcels (2013), ESRI Topographic BaseMap (2018)
More information about this project can be found at: www.forests-settled-urban-landscapes.org